

KLINGH-PAK

KP-SWM Manual Carton Stapler

MANUAL/WARNING:

IMPORTANT PLEASE READ BEFORE USING TOOL

Please read the following operating instructions manual. Refer to this manual for safety, adjustment and trouble shooting instructions. If you have any further questions please contact your distributor.



1320 Tower Road Schaumburg, IL 60173
Phone: 888-392-9947 Fax: 877-393-2948



TABLE OF CONTENTS

	PAGE
TOOL SPECIFICATIONS	4
SAFETY INSTRUCTIONS	5
LUBRICATION AND MAINTENANCE	6
ADJUSTING FOR STAPLE LEG LENGTH	6
CLINCH ADJUSTMENT	7
DEPTH ADJUSTMENT	7
EXPLODED VIEW OF TOOL	8
PARTS LIST	9
TROUBLE SHOOTING	10



TOOL SPECIFICATIONS

MODEL OF TOOLKP-SWM
DIMENSIONS (LENGTH x HEIGHT x WIDTH) 15" x 4.5" x 11.5"
WEIGHT (WITHOUT FASTENERS) 3.75 lbs

COMPRESSED AIR :

MAXIMUM PERMISSIBLE OPERATING PRESSURE N/A
RECOMMENDED OPERATING PRESSURE..... N/A
AIR CONSUMPTION N/A

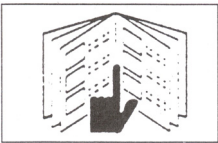
STAPLE SPECIFICATION 1-3/8" CROWN
LEG LENGTH 5/8", 3/4"
STAPLE CAPACITY 100 PCS (2 Strips)

THE NOISE LEVELS: (AT THE WORKPLACE, ALWAYS WEAR HEARING PROTECTION EQUIPMENT.)

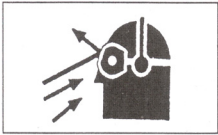
A WEIGHTED SINGLE EVENT SOUND PRESSURE LEVEL AT OPERATOR'S POSITION: **NA**
A WEIGHTED SINGLE EVENT SOUND POWER LEVEL **NA**
A WEIGHTED SINGLE EVENT SURFACE SOUND PRESSURE LEVEL **NA**

KLINGH-PAK

SAFETY INSTRUCTIONS



- **Warning:** Read this manual and understand all safety instructions before operation of the tool. If you have any questions, please contact our Authorized Representatives.



- **Always** wear safety goggles when operating tool.



- **Always** handle with care.



- **Do not** place your hand or any other body part near or around the staple clinching area.



- **Always** makes sure the tool is resting on the carton you are trying to seal. Do not point tool towards anyone.

KLINGH-PAK

ADJUSTING FOR STAPLE LEG LENGTH



- Loosen the set screw (526 on Schematic) with a 3 mm Hex Key



- Turn adjusting rod (018 on Schematic) 180 degrees with a flat head screw drive to the desired setting. See diagram A, for positioning explanation.

A.

STAPLES LENGTHS	15MM	18MM
ROD POSITION		

- Tighten Set Screw (526) when positioned to desired setting.

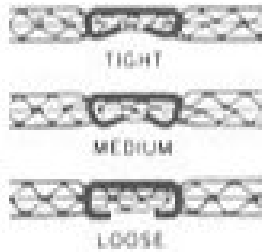
KLING-PAK

CLINCH ADJUSTMENT



- Use 3mm Rod or 2.5mm Hex Key to turn the collar (006 on Schematic) found in the front window of the tool. Rotate clockwise for tighter clinch. Counterclockwise for the loose setting. See diagram B.

B.



DEPTH ADJUSTMENT



- Loosen the Front Screw (527 on the Schematic) with a 6 mm Hex Key.

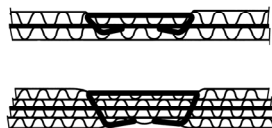


- Push the body (007) up and adjust to desired depth.

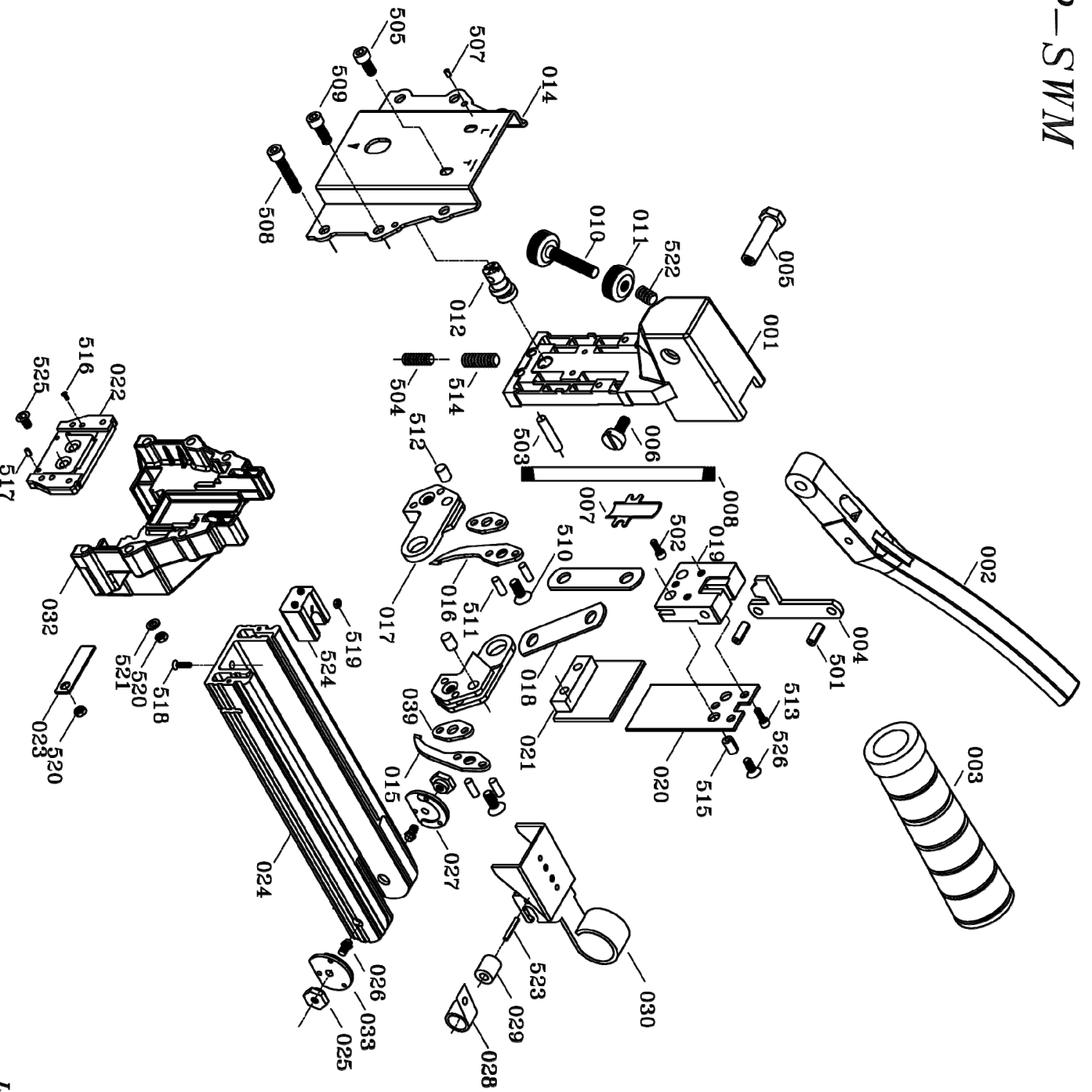


- When top edge of the adjustment plate (019) is at it's highest setting the teeth are at their shallowest penetration. If set at lowest position, the teeth are at their deepest penetration. See diagram C.

C.



MODEL : KP-SWM



PARTS LIST (KP-SMM)

*WHEN ORDERING SPARE PARTS, PLEASE STATE ITEM NO, PART NO. AND DESCRIPTION.

ITEM	PART NO	DESCRIPTION	QTY	ITEM	PART NO	DESCRIPTION	QTY	ITEM	PART NO	DESCRIPTION	QTY
001	9200101	BODY	1	504	91006601	HEX.SOC.HDLESS.BOLT	1				
002	92000201	HANDLE	1	505	91307001	HEX.SOC.HD.BOLT	2				
003	92000301	HANDLE GLEEVE	1	507	91005901	SPRING PIN	4				
004	92000401	LINK	1	508	91006901	HEX.SOC.HD.BOLT	2				
005	92000501	PIVOT PIN	1	509	91007001	HEX.SOC.HD.BOLT	4				
006	92000601	PIVOT SCREW	1	510	91007101	FLAT.HD.BOLT	2				
007	92000701	COVER	1	511	91007201	PN**	4				
008	92000801	SPRING	1	512	91007301	PN**	2				
010	92000901	ADJUSTMENT SCREW	1	513	91007401	HEX.SOC.HD.BOLT	2				
011	92001001	ADJUSTMENT NUT	1	514	91008701	HELI-COIL	1				
012	91002001	ADJUSTING ROD	1	515	91007501	SPRING PIN	2				
014	92001101	FRONT PLATE	1	516	91007601	FLAT.HD.SCREW	2				
015	91002301	RIGHT TEETH**	1	517	91007701	SPRING PIN	2				
016	91002401	LEFT TEETH**	1	518	91007801	FLAT.HD.BOLT	1				
017	91002501	TEETH SEAT**	2	519	91007901	LOCK NUT	1				
018	91002601	PLATE	2	520	91008001	LOCK NUT	6				
019	92001201	BLOCK	1	521	91008101	WASHER	4				
020	91002801	DRIVER**	1	522	92001601	HELI-COIL	1				
021	92001301	COVER DRIT	1	523	91008201	SPRING PIN	1				
022	91203001	DRIVER GUIDE UNIT**	1	524	91008501	BRACKET	1				
023	91003101	PLATE	2	525	91008601	FLAT.HD.BOLT	2				
024	91203201	MAGAZINE	1	526	91009001	FLAT.HD.BOLT	1				
025	91003301	ROD NUT**	2								
026	91003401	ROD**	2								
027	91003901	RIGHT PUSHER GUIDE**	1								
028	91003501	SPRING**	1								
029	91003601	ROLLER**	1								
030	91203701	PUSHER UNIT**	1								
032	92001401	MAGAZINE SEAT	1								
033	91004001	LEFT PUSHER GUIDE**	1								
039	91004101	WASHER	2								
501	92001501	SPRING PIN	2								
502	91005101	HEX.SOC.HD.BOLT	2								
503	91006501	ROD	2								



TROUBLE SHOOTING

PROBLEM	CAUSE	REMEDY
EXCESSIVE JAMS:	ANVIL SCREWS (510) LOOSE.	TIGHTEN SCREWS (510)
	STAPLE SIZE IS WRONG.	USE THE PROPER SIZE STAPLE.
UNEVEN CLINCH	WRONG STAPLE SIZE	CHECK FOR PROPER CHLINCH & LEG LENGTH ADJUSTMENT
UNCLINCHED STAPLE	ANVIL (015,016) LOOSE	TIGHTEN ANVIL (015,016)
	ANVIL (015,016) ARE BROKEN	REPLACE ANVIL (015,016)

Products offered by



KLINGH-PAK

COMPLETE

APACH

Rapid  [®]

Call today for more details

Visit our web site
www.axxisus.com

Or

Email us @
reception.inc@axxisus.com



1320 Tower Road Schaumburg, IL 60173
Phone: 888-392-9947 Fax: 877-393-2948