

# KLINGPAK

## KP-GR1-22 Pneumatic Carton Stapler

MANUAL/WARNING:

### **IMPORTANT PLEASE READ BEFORE USING TOOL**

Please read the following operating instructions manual. Refer to this manual for safety, adjustment and trouble shooting instructions. If you have any further questions please contact your distributor.



1320 Tower Road Schaumburg, IL 60173  
Phone: 888-392-9947 Fax: 877-393-2948





# TABLE OF CONTENTS

|                                       | PAGE |
|---------------------------------------|------|
| TOOL SPECIFICATIONS .....             | 4    |
| SAFETY INSTRUCTIONS .....             | 5    |
| LUBRICATION AND MAINTENANCE .....     | 6    |
| ADJUSTING FOR STAPLE LEG LENGTH ..... | 6    |
| CLINCH ADJUSTMENT .....               | 7    |
| DEPTH ADJUSTMENT .....                | 7    |
| EXPLODED VIEW OF TOOL .....           | 8    |
| PARTS LIST .....                      | 9    |
| TROUBLE SHOOTING .....                | 10   |



## TOOL SPECIFICATIONS

MODEL OF TOOL .....KP-GR1-22  
DIMENSIONS (LENGTH x HEIGHT x WIDTH) ..... 9.5" x 4.5" x 9"  
WEIGHT (WITHOUT FASTENERS) ..... 5.3 lbs

### COMPRESSED AIR :

MAXIMUM PERMISSIBLE OPERATING PRESSURE ..... 90 PSI  
RECOMMENDED OPERATING PRESSURE..... 71 PSI  
AIR CONSUMPTION ..... 0.067 M<sup>3</sup> / MIN (2.4 C.F.M)  
WITH 60 STAPLES PER MINUTE  
@5.66 KG/CM<sup>2</sup>(80 PSI)  
STAPLE SPECIFICATION ..... 1-1/4" CROWN (GR series),  
LEG LENGTH 7/8"  
STAPLE CAPACITY ..... 1000 PCS (1, 1M Roll)

THE NOISE LEVELS: (AT THE WORKPLACE, ALWAYS WEAR HEARING PROTECTION EQUIPMENT.)

A WEIGHTED SINGLE EVENT SOUND PRESSURE LEVEL AT OPERATOR'S POSITION: ..... **L Pa, 1s = 89 dBA**  
A WEIGHTED SINGLE EVENT SOUND POWER LEVEL ..... **L WA, 1s = 93 Dba**  
A WEIGHTED SINGLE EVENT SURFACE SOUND PRESSURE LEVEL ..... **L Pa, 1s, 1m = 80 dBA**

# KLINGH-PAK

## SAFETY INSTRUCTIONS



- Read this manual and understand all safety instructions before operation of the tool. If you have any questions, please contact our Authorized Representatives.



- **Never** allow use of any type of Flammable Gases or Oxygen as a power source for the tool. Use only Filtered, Lubricated, Regulated, Compressed Air.



- **Never** use Gasoline or other Flammable Liquids to clean the tool. Vapors in the tool will ignite by a spark and cause it to explode.



- **Do not exceed** Maximum Permissible Operating Pressure of the tool (90-PSI).



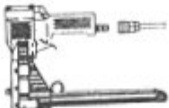
- Disconnect the tool from air supply before clearing jams, servicing, adjusting and during non-operation.



- **Do not** carry the tool by the hose or pull the hose to move the tool.



- Always wear protective equipment such as safety glasses, ear protection and head protection.



- **Do not** remove the check valve or any other fitting which allows air to remain in the tool.



- **Do not** place your hand or any part of your body in the staple clinching area or adjustment window when connecting or disconnecting the air supply.



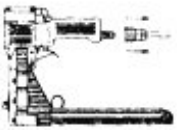
- **Never** point any tools that fire projectiles at yourself or another person.

# KLINGH-PAK

## LUBRICATION AND MAINTENANCE



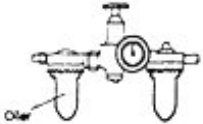
- Your tool requires lubrication before you use for the **First Time**.



- Disconnect the Air Supply** from the tool before lubricating



- Turn the tool so the inlet is facing up and put one drop of Lubricating Oil into air inlet. **NEVER** use **DETERGENT OIL** or **ADDITIVES**. Operate the tools briefly after adding oil.



- Wipe off excess oil at the exhaust. Excess oil will damage the O-Rings of the tool (If in-line oiler is used). Manual lubrication through the air inlet is **NOT** required on a daily basis.

## ADJUSTING FOR STAPLE LEG LENGTH



- Disconnect the Air Supply**



- Loosen the set screw (526 on Schematic) with a 3 mm Hex Key
- Turn adjusting rod (018 on Schematic) 180 degrees with a flat head screw drive to the desired setting. See diagram A, for positioning explanation.

A.

|                 |        |        |
|-----------------|--------|--------|
| STAPLES LENGTHS | 15MM   | 18MM   |
| ROD POSITION    | S<br>L | L<br>S |

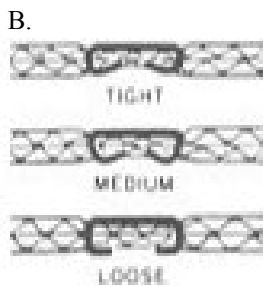
- Tighten Set Screw (526) when positioned to desired setting.

# KLING-PAK

## CLINCH ADJUSTMENT



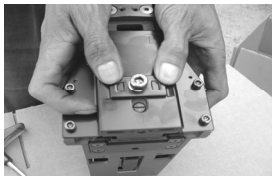
- **Disconnect the Air Supply**
- Use 3mm Rod or 2.5mm Hex Key to turn the collar (006 on Schematic) found in the front window of the tool. Rotate clockwise for tighter clinch. Counterclockwise for the loose setting. See diagram B.



## DEPTH ADJUSTMENT



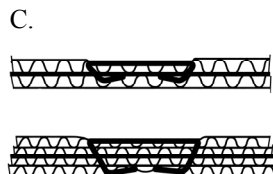
- **Disconnect the Air Supply**
- Loosen the Front Screw (527 on the Schematic) with a 6 mm Hex Key.



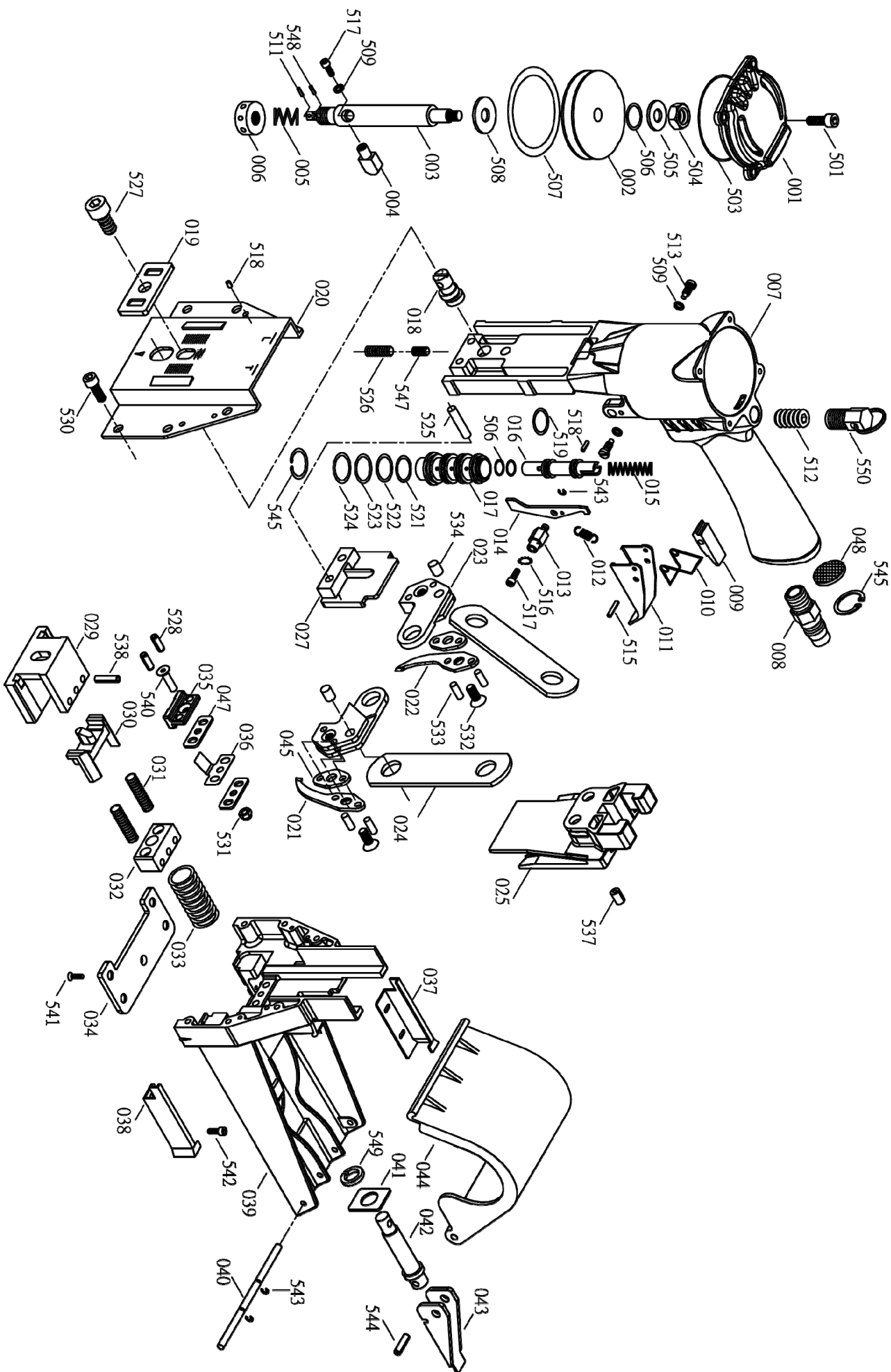
- Push the body (007) up and adjust to desired depth.



- When top edge of the adjustment plate (019) is at it's highest setting the teeth are at their shallowest penetration. If set at lowest position, the teeth are at their deepest penetration. See diagram C.



# MODEL : KP-CR1-22





**PARTS LIST (KP-GRI-22)**

**\*WHEN ORDERING SPARE PARTS, PLEASE STATE ITEM NO., PART NO. AND DESCRIPTION.**

| ITEM | PART NO  | DESCRIPTION         | QTY | ITEM | PART NO  | DESCRIPTION            | QTY | ITEM | PART NO  | DESCRIPTION                | QTY |
|------|----------|---------------------|-----|------|----------|------------------------|-----|------|----------|----------------------------|-----|
| 001  | 91000102 | CAP                 | 1   | 037  | 91503801 | RIGHT COIL GUIDE       | 1   | 528  | 91307501 | SPRING PIN                 | 2   |
| 002  | 91000201 | PISTON              | 1   | 038  | 91503901 | LEFT COIL GUIDE        | 1   | 530  | 91307001 | HEX. SOC. HD. BOLT         | 6   |
| 003  | 91000301 | PISTON ROD          | 1   | 039  | 91406601 | MAGAZINE SEAT          | 1   | 531  | 91008001 | LOCK NUT                   | 1   |
| 004  | 91000401 | BLOCK               | 1   | 040  | 91304201 | SHAFT                  | 1   | 532  | 91007101 | FLAT. HD. BOLT             | 2   |
| 005  | 91000501 | SPRING              | 1   | 041  | 91404301 | WASHER                 | 1   | 533  | 91007201 | PIN**                      | 4   |
| 006  | 91000601 | COLLAR              | 1   | 042  | 91304501 | SHAFT                  | 1   | 534  | 91007301 | PIN**                      | 2   |
| 007  | 91000701 | BODY                | 1   | 043  | 91304601 | LEVER                  | 1   | 537  | 91007501 | SPRING PIN                 | 2   |
| 008  | 91000801 | AIR PLUG            | 1   | 044  | 91304701 | COVER                  | 1   | 538  | 91307601 | SPRING PIN                 | 3   |
| 009  | 91001101 | BLOCK               | 1   | 045  | 91304801 | PLATE                  | 2   | 540  | 91307201 | HEX. SOC. FLAT COUNTER SNK | 1   |
| 010  | 91001201 | SPRING**            | 1   | 047  | 91305201 | WASHER                 | 2   | 541  | 91307801 | HEX. SOC. FLAT             | 4   |
| 011  | 91001301 | TRIGGER             | 1   | 048  | 91004301 | SILENCER               | 1   | 542  | 91307901 | ROUND. HD. SCREW           | 4   |
| 012  | 91001401 | SPRING**            | 1   | 501  | 91004201 | HEX. SOC. HD. BOLT     | 4   | 543  | 91008401 | E-RING                     | 3   |
| 013  | 91001501 | ROD**               | 1   | 503  | 91004401 | O-RING**               | 1   | 544  | 91308001 | SPRING PIN                 | 1   |
| 014  | 91001601 | TRIGGER' S CONTROL  | 1   | 504  | 91004501 | HEX. NUT               | 1   | 545  | 91008301 | C-RING                     | 2   |
| 015  | 91001701 | SPRING**            | 1   | 505  | 91004601 | WASHER                 | 1   | 547  | 91008701 | HELL-COIL                  | 1   |
| 016  | 91001801 | VALVE               | 1   | 506  | 91004701 | O-RING**               | 3   | 548  | 91008801 | PLASTIC PIN                | 1   |
| 017  | 91001901 | TUBE                | 1   | 507  | 91004801 | O-RING**               | 1   | 549  | 91308101 | WAVE WASHER                | 1   |
| 018  | 91002001 | ADJUSTING ROD       | 1   | 508  | 91004901 | WASHER                 | 1   | 550  | 91008901 | COUNTER BALANCER           | 1   |
| 019  | 91002101 | ADJUSTING PLATE     | 1   | 509  | 91005001 | SPRING WASHER          | 3   |      |          |                            |     |
| 020  | 91502201 | FRONT PLATE         | 1   | 511  | 91005201 | SPRING PIN             | 1   |      |          |                            |     |
| 021  | 91502301 | RIGHT TEETH**       | 1   | 512  | 91005301 | HEX. SOC. HDLESS. BOLT | 1   |      |          |                            |     |
| 022  | 91502401 | LEFT TEETH**        | 1   | 513  | 91005401 | TRIGGER SCREW**        | 2   |      |          |                            |     |
| 023  | 91002501 | TEETH SEAT**        | 2   | 515  | 91005601 | SPRING PIN             | 1   |      |          |                            |     |
| 024  | 91002601 | PLATE               | 2   | 516  | 91005701 | OUTSIDE TEETH WASHER   | 1   |      |          |                            |     |
| 025  | 91402801 | DRIVER**            | 1   | 517  | 91005801 | HEX. SOC. HD. BOLT     | 2   |      |          |                            |     |
| 027  | 91402901 | DRIVER GUIDE UNIT** | 1   | 518  | 91005901 | SPRING PIN             | 5   |      |          |                            |     |
| 029  | 91503001 | ANVIL               | 1   | 519  | 91006001 | O-RING**               | 1   |      |          |                            |     |
| 030  | 91403101 | PUSHER              | 1   | 521  | 91006101 | O-RING**               | 1   |      |          |                            |     |
| 031  | 91303201 | SPRING              | 2   | 522  | 91006201 | O-RING**               | 1   |      |          |                            |     |
| 032  | 91303301 | ANVIL CAP           | 1   | 523  | 91006301 | O-RING**               | 1   |      |          |                            |     |
| 033  | 91303401 | SPRING              | 1   | 524  | 91006401 | O-RING**               | 1   |      |          |                            |     |
| 034  | 91303501 | PLATE               | 1   | 525  | 91006501 | ROD                    | 2   |      |          |                            |     |
| 035  | 91305001 | TOP GUIDE           | 1   | 526  | 91006601 | HEX. SOC. HDLESS. BOLT | 1   |      |          |                            |     |
| 036  | 91305101 | LEAF SPRING         | 1   | 527  | 91006701 | HEX. SOC. HD. BOLT     | 1   |      |          |                            |     |

NO : L91511

DATE: 09/19/2008



## TROUBLE SHOOTING

| PROBLEM                             | CAUSE  | REMEDY   |
|-------------------------------------|--|--|
| AIR LEAKAGE FROM TRIGGER .          | O-RING ON VALVE ( 016 ) OR ON TUBE ( 017 ) ARE DAMAGED .     | O-RING MUST BE REPLACED  |
| AIR LEAKAGE FROM EXHAUST PORT .     | O-RINGSON VALVE ( 016 ) OR ON TUBE ( 017 ) ARE DAMAGED .     | O-RING MUST BE REPLACED  |
|                                     | PISTON'S O-RING ( 507 ) IS DAMAGED .                         | O-RING MUST BE REPLACED  |
| AIR LEAKAGE RROM CYLINDER ( 004 ) . | PISTON ROD PORT ( 007 ) O-RING ( 519 ) IS DAMAGED .          | REPLACE THE O-RING .   |
| SLOW AND SHORT TRAVEL CYCLING       | CHECK FOR LOOSED SCREW ( 517 ) AND WEAR OF PARTS ( 014,009 ) | POSITION ECCENTRIC PIN ( 013 ) AS SHOWN AND TIGHTEN SCREW (517). IF SHORT TRAVEL OCCURS ADJUST PIN POSITION IN AN UPWARD POSITION. IF SLOW CYCLE ADJUST PIN IN A DOWNWARD DIRECTION. |
| EXCESSIVE JAMS :                    | SLOW AND SHORT TRAVEL CYCLING .                              | CHECK AS NOTED IN SLOW AND SHORT TRAVEL CYCLING SECTION .  |
|                                     | ANVIL SCREWS LOOSE .   | TIGHTEN SCREWS   |
|                                     | STAPLE SIZE IS WRONG .                                       | USE THE PROPER SIZE STAPLE   |
|                                     | INSUFFICIENT LUBRICATION                                     | SUITABLY CLEAN AND LUBRICATE   |
| UNEVEN CLINCH                       | WRONG STAPLE SIZE  | CHECK FOR PROPER LEG LENGTH ADJUSTMENT & CLINCHER SIZE .   |
| UNCLINCHED STAPLE                   | ANVIL ( 021,022 ) LOOSE                                      | TIGHTEN ANVIL ( 021,022 )  |
|                                     | ANVIL ( 021,022 ) ARE BROKEN                                 | REPLACE ANVIL ( 021,022 )  |
|                                     | SLOW AND SHORT TRAVEL CYCLING .                              | CHECK AS NOTED IN SLOW AND SHORT TRAVEL CYCLING SECTION .  |

*Products offered by*



**KLINGH-PAK**

**COMPLETE**

**APACH**

**Rapid** ®

*Call today for more details*

Visit our web site  
**[www.axxisus.com](http://www.axxisus.com)**

Or

Email us @  
**[reception.inc@axxisus.com](mailto:reception.inc@axxisus.com)**



**1320 Tower Road Schaumburg, IL 60173**  
**Phone: 888-392-9947 Fax: 877-393-2948**